



Blackheath Lodge Boutique Hotel is situated in Sea Point on Cape Town's Atlantic Seaboard, right under the iconic Signal Hill - close to the happening city centre of Cape Town, as well as the popular V&A Waterfront and Green Point Stadium. Blackheath Lodge has a rich history dating back to the 1880s. Its Victorian design, spacious interiors, high ceilings and wooden floors are combined with eclectic touches of African style and charm. A host of world-class restaurants is within easy reach of the lodge, and the famous beaches of Clifton and Camps Bay are just around the corner.

There are 18 luxury air-conditioned/heated en-suite rooms and suites, all elegantly furnished with extra-length king or twin beds, complimentary Wi-Fi, satellite television, iPad in each room, local cellphone for guests to use while out and about and tea and coffee making facilities. The tropical green garden, with heated pool and sun deck, is a perfect place to relax.

Our breakfast is freshly prepared each morning, offering a delicious spread of quiches and similar delights, fresh fruit and a full English breakfast. We are able to provide dinner or a picnic to enjoy on beach days or mountain walks, on request.

Additional services include private guided tours, early check-in / late check-out service - including a complimentary guest shower facility, door-to-door airport transfers, full laundry service, fully stocked bar, delicious dinners upon request, complimentary cake and biscuits, and off-street parking with security. Our dedicated team is on duty 24 hours a day.

We take personal care of your stay at Blackheath Lodge being a family owned and run business – rest assured that every detail will be taken care of. Blackheath Lodge's experienced team of staff takes pride in every aspect of Blackheath Lodge and the superior service they provide.



## GENERAL FACILITIES

Blackheath Lodge offers you the following facilities and amenities for your comfort and convenience. We are here to make your stay in Sea Point and South Africa an memorable one.

Our goal is to provide you with superior accommodation and excellent service while staying at our Boutique Hotel.

- Large heated salt water swimming pool
- A fully stocked bar
- Secure off-street parking
- Free Wi-Fi Internet access
- Guest lounge with wood fireplace
- Finest quality 100% percale linen
- Coffee and tea facilities
- TGCSA 4 Star graded
- Concierge
- Private luxury guided tours
- Lunch and dinners upon request
- Early check-in / late check-out service
- Swimming towels and sunscreen provided
- Turn down service



Reservations +27 (0)21 439 2541  
On Site Manager +27 (0)84 444 0580 / +27 (0)84 845 7727  
Email [stay@bhl.co.za](mailto:stay@bhl.co.za)

THE  
OYSTER  
COLLECTION



BLACKHEATH  
LODGE  
★★★★  
CAPE TOWN



## ROOM INFORMATION

Blackheath Lodge has everything you need for a luxurious holiday. There is plenty to do and see in Cape Town and surrounds from exploring the iconic world wonder, Table Mountain, to embarking on a gastronomical tour of the many fine restaurants and wine estates that abound. For a day of hiking or beach lounging, we'll provide a sumptuous picnic.



### Superior Suite

A spacious, self-contained suite with bathroom, kitchenette, generous living area, balcony with views, and fireplace. The Superior Suite sleeps 2-3 people.



### Loft Suite

The Loft Suite is located on the top floor with lovely sea views, sun terrace, loungers, partial dormers, 2 separate sleeping areas, walk-in shower, and kitchenette. The Loft Suite is ideal for families.



### Deluxe Apartment

Enjoy our most popular spacious, self-contained two bedroom apartment with bathroom, kitchenette, generous living areas, lounge, balcony with views, and fireplace.



### Loft En-suite Room

The Loft en-suite Rooms are located on the top floor and can accommodate 2 people. These rooms are located right next to one another, making them perfect for couples and families travelling together.





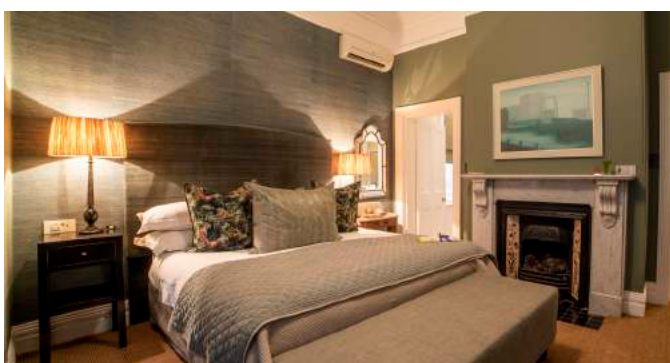


BLACKHEATH  
LODGE  
★★★★  
CAPE TOWN



## ROOM INFORMATION

Blackheath Lodge boasts 18 luxury rooms and suites, all elegantly furnished with king-sized or twin beds. The Boutique Hotel's close proximity to numerous world-class restaurants and the acclaimed beaches of Clifton and Camps Bay make it the perfect location from which to explore Cape Town and its surroundings.



### Deluxe Room

A more spacious room, for those who like that something more that can transform the room into something special. Some of our deluxe rooms have small balconies and can accommodate 2 people.



### Standard Room

These are our entry level en-suite rooms, which are beautifully decorated and located on the ground floor. The en-suite bathroom has a shower, basin and toilet. The Standard room sleeps 2 people.



### Funky Room

The Funky Room is our overflow entry level room. It is a 'quiet & cosy', compact, colourful, hip and trendy en-suite room and has 2.1m ceiling height throughout and is located on the ground floor. This room sleeps 2 people.

*"The perfect place from which to explore Cape Town and its surrounds..."*



Reservations +27 (0)21 439 2541  
On Site Manager +27 (0)84 444 0580 / +27 (0)84 845 7727  
Email [stay@bhl.co.za](mailto:stay@bhl.co.za)



— PHOTO GALLERY —



Lounge



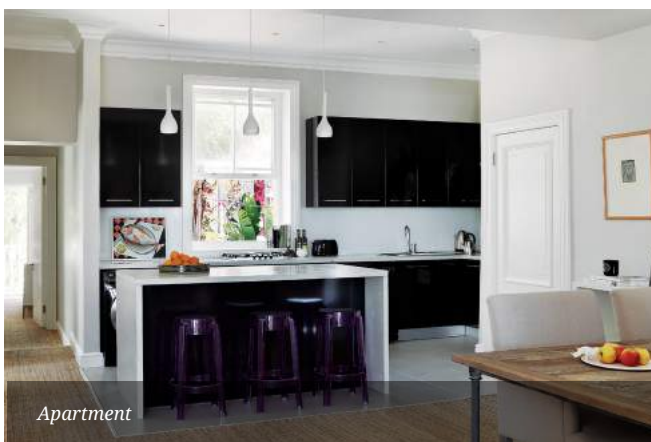
Bathroom



Reception



Cheese board and wine



Apartment



Outdoor Seating and Sun Loungers







THE  
OYSTER  
COLLECTION

Four-star grading by the Tourism  
Grading Council of South Africa



INFORMATION GUIDE

BLACKHEATH  
LODGE  
★★★★  
CAPE TOWN

— PHOTO GALLERY —



*Deluxe Room*



*Bar Area*



*Pool*



*Superior Suite Kitchen*



*Sundowner beside the Pool*



*Guest Bathroom*



Reservations +27 (0)21 439 2541  
On Site Manager +27 (0)84 444 0580 / +27 (0)84 845 7727  
Email [stay@bhl.co.za](mailto:stay@bhl.co.za)

THE  
OYSTER  
COLLECTION



— 2019 - 2020 RATES —

		09 January - May	June - August	September - 17 December	Peak Season 18 December - 08 January
<b>Superior Suite</b>	Per Unit (2 pax)	5 400	4 350	5 600	6 600
<b>Loft Suite</b>	Per Unit (2 pax)	5 400	4 350	5 600	6 600
<b>Aparment</b>	Per Unit (2 pax)	5 400	4 350	5 600	6 600
<b>Loft Room</b>	Per Unit (2 pax)	5 000	4 000	5 100	6 150
<b>Deluxe</b>	Per Unit (2 pax)	4 000	3 200	4 100	4 950
<b>Standard</b>	Per Unit (2 pax)	3 700	2 950	3 800	4 600
<b>Funky</b>	Per Unit (2 pax)	3 250	2 600	3 450	4 150
<b>Superior Suite</b>	Single	5 200	4 150	5 400	6 600
<b>Loft Suite</b>	Single	5 200	4 150	5 400	6 600
<b>Apartment</b>	Single	5 200	4 150	5 400	6 600
<b>Loft Room</b>	Single	4 800	3 800	4 900	6 150
<b>Deluxe</b>	Single	3 800	3 000	3 600	4 950
<b>Standard</b>	Single	3 500	2 750	3 950	4 600
<b>Funky</b>	Single	3 050	2 400	3 250	4 150

— TERMS AND CONDITIONS —

- Full payment 30 days prior to arrival
- Visa, MasterCard, Cash and EFT are accepted
- Children from 5+ years welcome. Younger children upon request
- Smoking is not permitted inside the premises, except for outside
- Check-in time is from 14h00 and check-out is before 11h00
- Complimentary breakfast is served from 07h00 until 10h00
- We regret, no pets





## 2021 RATES

		09 January - May	June - August	September - 17 December	Peak Season 18 December - 08 January
<b>Superior Suite</b>	Per Unit (2 pax)	5 650	4 650	5 850	6 750
<b>Loft Suite</b>	Per Unit (2 pax)	5 650	4 650	5 850	6 750
<b>Apartment</b>	Per Unit (2 pax)	5 650	4 650	5 850	6 750
<b>Loft Room</b>	Per Unit (2 pax)	5 150	4 250	5 250	6 250
<b>Deluxe</b>	Per Unit (2 pax)	4 250	3 350	4 350	4 950
<b>Standard</b>	Per Unit (2 pax)	3 950	3 150	3 950	4 750
<b>Funky</b>	Per Unit (2 pax)	3 350	2 750	3 550	4 250
<b>Superior Suite</b>	Single	5 450	4 450	5 650	6 750
<b>Loft Suite</b>	Single	5 450	4 450	5 650	6 750
<b>Apartment</b>	Single	5 450	4 450	5 650	6 750
<b>Loft Room</b>	Single	4 950	4 050	5 050	6 250
<b>Deluxe</b>	Single	4 050	3 150	4 150	4 950
<b>Standard</b>	Single	3 750	2 950	3 750	4 750
<b>Funky</b>	Single	3 150	2 550	3 350	4 250

### TERMS AND CONDITIONS

- Full payment 30 days prior to arrival
- Visa, MasterCard, Cash and EFT are accepted
- Children from 5+ years welcome. Younger children upon request
- Smoking is not permitted inside the premises, except for outside
- Check-in time is from 14h00 and check-out is before 11h00
- Complimentary breakfast is served from 07h00 until 10h00
- We regret, no pets







THE  
OYSTER  
COLLECTION

Four-star grading by the Tourism  
Grading Council of South Africa



INFORMATION GUIDE

BLACKHEATH  
LODGE  
★★★★  
CAPE TOWN

## — PRIVATE GUIDED TOURS —

A recent addition to The Oyster Collection is a fleet of tour vehicles that offer bespoke tour packages for our guests. The tours are tailor-made to ensure that our guests see the very best that the Cape has to offer. A variety of packages are available, each with a dedicated, qualified tour guide. Explore the Franschhoek and Stellenbosch Winelands, Constantia Valley Winelands, Cape Point, Hermanus, and Cape Town city and waterfront. See the sites of the Cape in the luxury of a private, guided tour. Transfers to and from the airport as well as to the next destination of your holiday can also be arranged. Please enquire for more information.



*"Hop in and discover the beauty of the Cape!"*



Reservations +27 (0)21 439 2541  
On Site Manager +27 (0)84 444 0580 / +27 (0)84 845 7727  
Email [stay@bhl.co.za](mailto:stay@bhl.co.za)

THE  
OYSTER  
COLLECTION





THE  
OYSTER  
COLLECTION

Four-star grading by the Tourism  
Grading Council of South Africa



INFORMATION GUIDE

BLACKHEATH  
LODGE  
★★★★  
CAPE TOWN

## — BLACKHEATH LODGE MAP & DIRECTIONS —



### PHYSICAL ADDRESS

6 Blackheath Road,  
Sea Point,  
Cape Town,  
South Africa, 8006

### GPS CO-ORDINATES

33.913° S, 18.3976° E

### CONTACT

+27 (0)21 439 2541



Reservations +27 (0)21 439 2541  
On Site Manager +27 (0)84 444 0580 / +27 (0)84 845 7727  
Email [stay@bhl.co.za](mailto:stay@bhl.co.za)

THE  
OYSTER  
COLLECTION